

# PINOUT

## DESCRIPTION:

Pinout for Pro Co ConcertMaster 150-pin Cable/Panel-mount female multipin connectors (TLDC150LF06, TLDC150PF26) Rear pinout view shown. NOTE: This is also the front view for male connectors.

## ABBREVIATIONS:

- S = Shield
- + = Hot (+)
- = Cold (-)

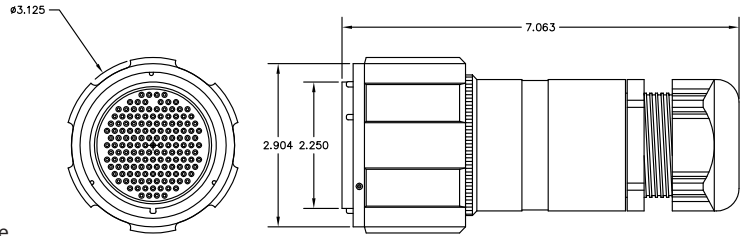
## STANDARD PREP LENGTHS:

Channel #	Length
1 - 8	2-5/8"
9 - 16	1-7/8"
17 - 24	3"
25 - 32	1-1/2"

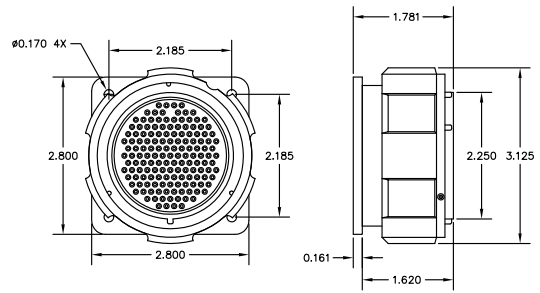
## 150-PIN TOURLINE MULTIPIN CONNECTOR PART NUMBERS:

PART NUMBER	DESCRIPTION
TLDC150LF06	Female, Cable mount, w/Locking ring, Dust cap
TLDC150PF26	Female, Panel mount, w/Locking ring, Dust cap
TLDC150LM01	Male, Cable mount, Dust cap
TLDC150PM02	Male, Panel mount, Dust cap

All Tourline multipin connectors are delivered pre-populated with solder-type contacts. Replacement contacts and tools are available from Pro Co. Please contact 800-253-7360 for assistance.

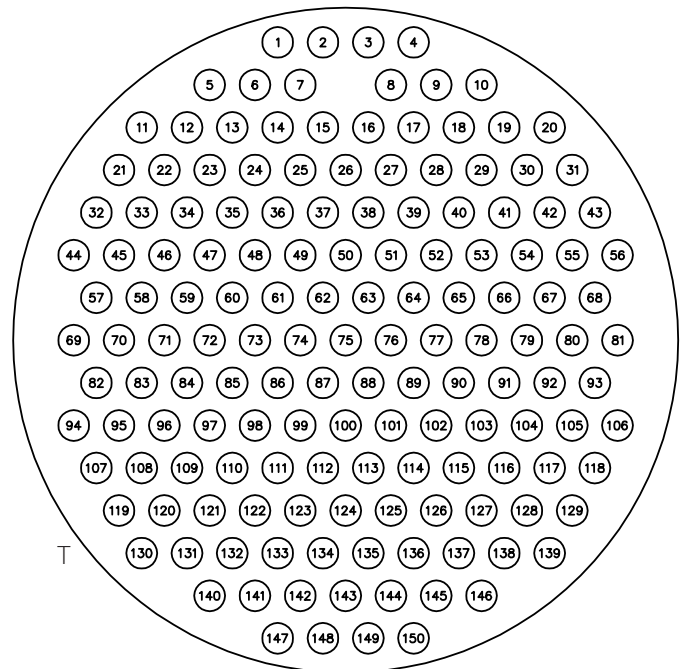


TL-150-LF06: 150 PIN FEMALE CABLE MOUNT CONNECTOR



TL-150-PF26: 150 PIN FEMALE PANEL MOUNT CONNECTOR

### REAR VIEW



TL-150-PF26: 150 PIN FEMALE CONNECTOR

PINOUT CHART ON REVERSE SIDE

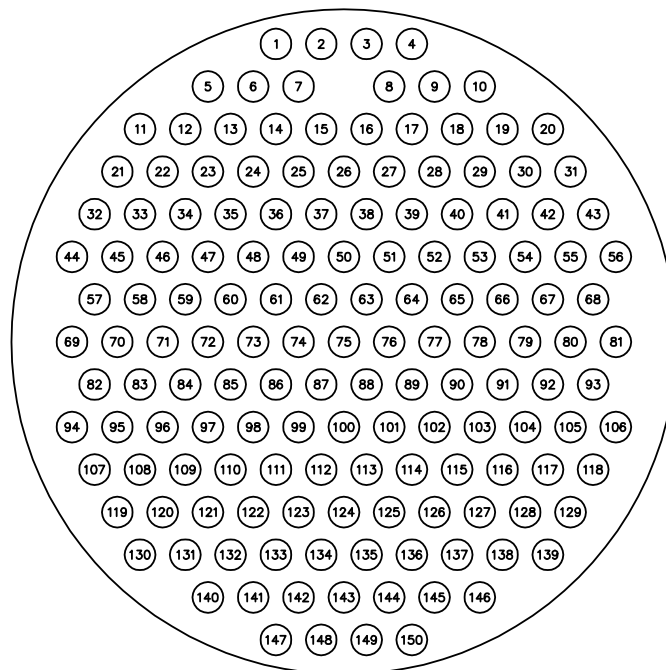
# Tourline TL-150 FC/FP

## PINOUT CHART:

CHANNEL PINOUT			
CH	+	-	S
1	1	2	3
2	5	6	7
3	8	9	10
4	11	12	13
5	14	15	16
6	17	18	19
7	21	22	23
8	24	25	26
9	27	28	29
10	20	30	31
11	32	33	34
12	35	36	37
13	38	39	40
14	41	42	43
15	44	45	46
16	47	48	49
17	50	51	52

CHANNEL PINOUT			
CH	+	-	S
18	53	54	55
19	57	58	59
20	60	61	62
21	63	64	65
22	66	67	68
23	69	70	71
24	72	73	74
25	75	76	77
26	78	79	80
27	82	83	84
28	85	86	87
29	88	89	90
30	91	92	93
31	94	95	96
32	97	98	99
33	100	101	102
34	103	104	105

CHANNEL PINOUT			
CH	+	-	S
35	56	81	106
36	107	108	109
37	110	111	112
38	113	114	115
39	116	117	118
40	119	120	121
41	122	123	124
42	125	126	127
43	139	128	129
44	130	131	132
45	133	134	135
46	136	137	138
47	140	141	142
48	143	144	145
49	146	147	148
50	149	4	150



REAR VIEW

TL-150-PF26: 150 PIN FEMALE CONNECTOR